

# Recombinant human Cyclophilin H/PPIH protein

Catalog Number: IBPPH0901



## PRODUCT INFORMATION

---

### Expression system

E.coli

### Domain

1-177aa

### UniProt No.

O43447

### NCBI Accession No.

NP\_006338

### Alternative Names

Peptidylprolyl isomerase H, Peptidylprolyl isomerase H, PPIH, CYPH, CYP20, SnuCyp-20, SnuCyp-20, PPIase H, Rotamase H, Cyclophilin H, Peptidylprolyl isomerase H CypH, EC 5.2.1.8, MGC5016, Small nuclear ribonucleoprotein particle-specific cyclophilin H, uSACYP, usnRNP associated cyclophilin SnuCyp20,

## PRODUCT SPECIFICATION

---

### Molecular Weight

19.2 kDa (177aa) confirmed by MALDI-TOF

### Concentration

1mg/ml (determined by Bradford assay)

### Formulation

Liquid in. Phosphate-Buffered Saline (pH 7.4) containing 10% glycerol

### Purity

> 95% by SDS-PAGE

### Endotoxin level

< 1 EU per 1ug of protein (determined by LAL method)

### Biological Activity

Specific activity is > 220nmol/min/mg, and is defined as the amount of enzyme that cleaves 1umole of suc-AAPF-pNA per minute at 37C in Tris-Hcl pH8.0 using chymotrypsin.

### Tag

Non-Tagged

### Application

SDS-PAGE, Enzyme Activity

### Storage Condition

Can be stored at +2C to +8C for 1 week. For long term storage, aliquot and store at -20C to -80C. Avoid repeated freezing and thawing cycles.

---

**For research use only. This product is not intended or approved for human, diagnostics or veterinary use.**



Manufactured for:

Immuno-Biological Laboratories, Inc. (IBL-America)  
8201 Central Ave. NE, Suite P, Minneapolis, Minnesota 55432, USA  
Phone: (888) 523-1246 Fax.: (763) 780-2988  
Email: [info@ibl-america.com](mailto:info@ibl-america.com) Web: [www.ibl-america.com](http://www.ibl-america.com)

# Recombinant human Cyclophilin H/PPIH protein

Catalog Number: IBPPH0901



## BACKGROUND

### Description

Cyclophilin H (also known as peptidylpropyl isomerase H, PPIH) is a member of peptidyl-propyl cis-trans isomerase (PPIase) family, which catalyzes the cis-trans isomerization of proline imidic peptide bonds in oligopeptides and accelerates the folding of proteins. The cyclophilin H is a specific component of the human u4/u6 small nuclear ribonucleoprotein particle involved in the nuclear splicing of pre-mRNA. It stably associates with the u4/u6-60kD and -90kD proteins, the human orthologues of the *Saccharomyces cerevisiae* Prp4 and Prp3 splicing factors. Recombinant human cyclophilin H was expressed in *E. coli* and purified by conventional chromatography techniques.

### Amino acid Sequence

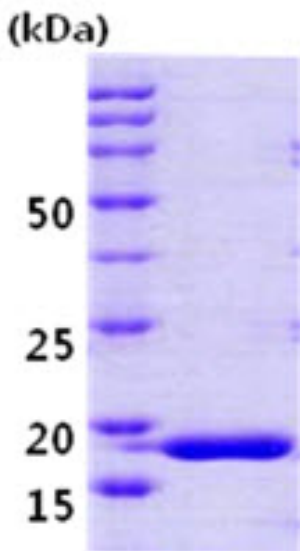
MAVANSSPVN PVVFFDVSIG GQEVGRMKIE LFADVVPKTA ENFRQFCTGE FRKDGVPiGY KGSTFHRVIK DFMIQGGDFV  
NGDGTGVASI YRGPFADENF KLRHSAPGLL SMANSGPSTN GCQFFITCSK CDWLDGKHVV FGKIIDGLLV MRKIENVPTG  
PNNKPKLPVV ISQCGEM

### General References

Reidt u., et al. (2000) J Biol Chem. 275(11):7439-42.  
Horowitz DS., et al. (2002) EMBO. 21(3):470-80.

## DATA

### SDS-PAGE



3ug by SDS-PAGE under reducing condition and visualized by coomassie blue stain.

15% SDS-PAGE (3ug)

For research use only. This product is not intended or approved for human, diagnostics or veterinary use.



Manufactured for:  
Immuno-Biological Laboratories, Inc. (IBL-America)  
8201 Central Ave. NE, Suite P, Minneapolis, Minnesota 55432, USA  
Phone: (888) 523-1246 Fax.: (763) 780-2988  
Email: [info@ibl-america.com](mailto:info@ibl-america.com) Web: [www.ibl-america.com](http://www.ibl-america.com)